



Simply unmatched

Stereo Zoom Microscope for Laboratory & Industry,

Modular assembly consisting of Trinocular Head, Focus Mechanism and Pillar Base.

Head: Trinocular (split ratio: 50/50), 360° rotating on all stands and 45° inclined.

Interpupillary distance: Adjustable between 51 and 75 mm.

Dioptric adjustment: On both eyepieces.

Eyepieces: WF10x/20 mm, high eyepoint, secured by screw and with integrated rubber cups.

Objective: Parfocal achromatic zoom 0.67x...4.5x (zoom factor 6.72:1)

Working distance: 100mm.

Incident Illumination: X-LED³ with white 3.6 W LED (6,300K) with brightness control.

Transmitted Illumination: 12-LED X-LED^{T1} disc with white 2 W LED and brightness control. Colour temperature: 6,300K.

External Power Supply as per with MIC:005A.

Base Dimensions: 280 mm (H) x 210 mm (W) x 270 mm (D), 1.90kg

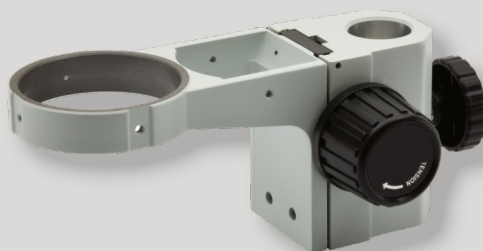
Head Dimensions: 235 mm (H) x 180 mm (W) x 195 mm (D), 1.60kg

Key Features

- ✓ *x6.7 to x45 magnification range*
- ✓ *Trinocular head*
- ✓ *x10 eyepieces*
- ✓ *fitted with X-LED^{T1} incident light and an X-LED³ transmitted light source with dimmer control, frosted glass plate and reversible black/white stage.*

Professional Camera, Adaptor and Projection Lens are available as an option.

Order Code: MIC:006



Simply unmatched

Stereo Zoom Microscope for Laboratory & Industry.

Modular assembly consisting of Trinocular Head, Focus Mechanism and Pillar Base.

Head: Trinocular (split ratio: 70/30), 360° rotating on all stands and 45° inclined.

Interpupillary distance: Adjustable between 51 and 75 mm.

Dioptric adjustment: On both eyepieces.

Eyepieces: WF10x/20 mm, high eyepoint, secured by screw and with retractable rubber cups.

Objective: Parfocal achromatic zoom 0.67x...4.5x (zoom factor 6.72:1) with click-stop.

Working distance: 110mm.

Incident Illumination: Two flexible X-LED³ gooseneck arms with white 3.6 W LED/each and brightness control. Illuminance: 170,000lux (at 10cm distance). Colour Temperature: 6,300 K.

Transmitted Illumination: 12-LED X-LED^{T1} disc with white 2 W LED and brightness control. Illuminance: 4,000 lux. Colour temperature: 6,300K. External Power Supply as per with MIC:005A.

Base Dimensions: 280 mm (H) x 210 mm (W) x 270 mm (D), 2.40kg

Head Dimensions: 240 mm (H) x 167 mm (W) x 200 mm (D), 1.80kg

Stage: 100 mm dia., Translucent and black/white discs with sample clips.

Key Features

- ✓ *x6.7 to x45 magnification range*
- ✓ *Trinocular head rotating 360° and 45° inclined*
- ✓ *Widefield eyepieces 10x with field number 23*
- ✓ *Incident light source: Two XLED³ light sources, illuminance 170,000lux, colour temperature 6300K*
- ✓ *Input voltage 110/240VAC, 50/60Hz (External power supply provided)*

Professional Camera, Adaptor and Projection Lens available as an option.

Order Code: MIC:007